

AIR FILTER UNITS

AFU 180



WHO WE ARE?

- Arconik is an uprising multinational company
- An unique combination of expertise, R&D, know-how, and experience in the area of air filtration solutions positions Arconik as one of the most esteemed and fastest-growing companies in its field in the world.
- Our wide range of solutions provide protection for all, from the smallest system for family protection to systems for protections of thousands of civilians.
- The vast practical & real field experience we have gained through tens of thousands of our successful installations places us as one of the fast growing companies in its field in the world.

MAIN FEATURES

- Filtering capacity 36-1800 m³/h is available.
- Filters are carefully and regularly tested and approved by various international laboratories.
- Pressure release valve for quick internal release of over/under pressure are provided to all range of filters.
- Maintenance-free, periodical monitoring is recommended.
- Hermetically delivered with a tamper-proof seal.

ADVANTAGES

- Heavy duty steel housing with phosphate treatment and powder coating finished for high corrosion resistance.
- Includes shock absorbers for floor connection.
- Quick connectors are provided for fast and easy operation.



APPLICATIONS

Safe Rooms



Hospitals



Oil Refineries

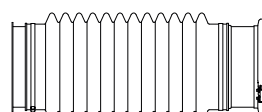
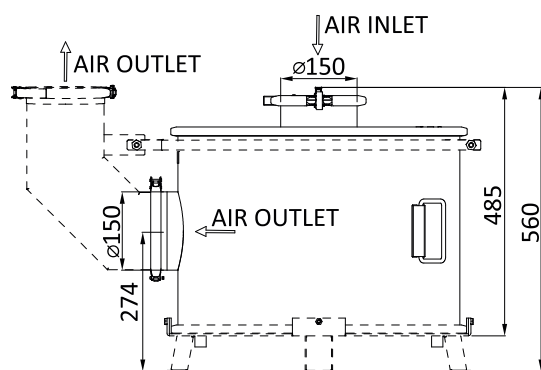
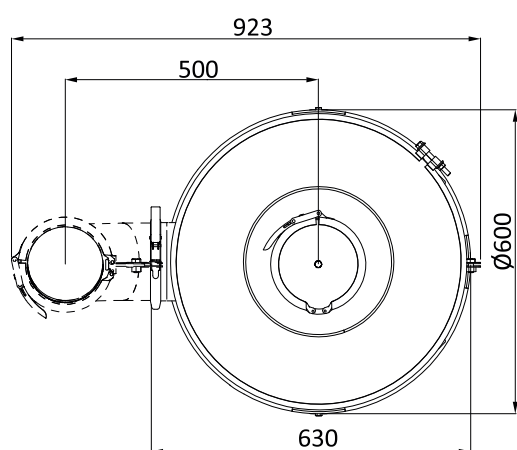


Power Plants

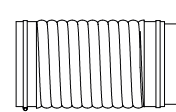


TECHNICAL SPECIFICATIONS - AFU 180

| Properties | Air Flow / Rated Capacity | Pressure Drop at Nominal Flow | Weight | Particulate Filtration Efficiency (AT 0.3 μ) | Working Temp. Range |
|------------|------------------------------|----------------------------------|--------|--|------------------------|
| Values | 180 | 500 | 72 | ≥ 99.995 | -20 to +70 |
| Units | m ³ /h | Pa | Kg | % | °C |



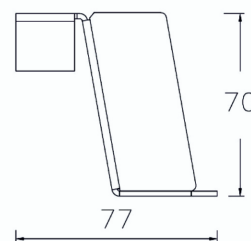
FLEXIBLE RUBBER HOSE



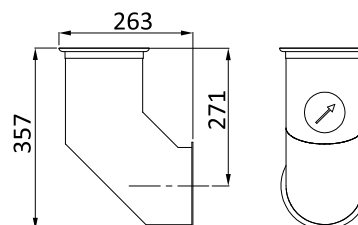
FLEXIBLE TARPAULIN HOSE

MIN & MAX LENGTH : 400 to 650

MIN & MAX LENGTH : 270 to 1950

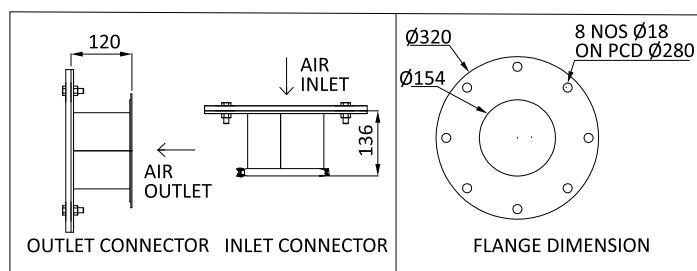


FILTER MOUNTING STAND



PIPE WITH FLOW INDICATOR FOR AFU 180

OPTIONAL KIT FOR FLOOR MOUNTING



OPTIONAL KIT FOR REPLACEMENT OF QUICK CONNECTION TO FLANGE